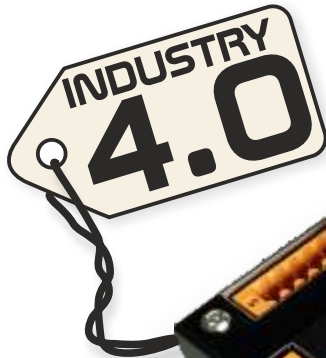




ROSETTA^{CNC} BOARD A

INDUSTRIAL ETHERNET MOTION CONTROLLER FOR YOUR CNC MACHINE TOOLS



Program Machine

Positioning Info

Tool Path	Joints Feed	Joints Feed
In Feed: 0.000 mm		
In Feed: 3999.412 mm		
Total Path: 3999.412 mm		
Estimated Time: 00:03:08		

TCP Extends in Feed

Min X	Min Y	Min Z	Max X	Max Y	Max Z	Length X	Length Y	Length Z
0.000 mm	0.000 mm	0.000 mm	0.000 mm	0.000 mm	0.000 mm	0.000 mm	0.000 mm	0.000 mm

TCP Extends in Feed

Min X	Min Y	Min Z	Max X	Max Y	Max Z	Length X	Length Y	Length Z
-121.927 mm	-29.312 mm	5.546 mm	29.821 mm	63.744 mm	173.929 mm	151.748 mm	93.056 mm	308.383 mm

Work

On: []
Model: []
Machine: []
TO: []

Estimated Time: 00:03:08
Worked Time: 00:00:00
Autosave: 10%

Start [] Stop [] Pause []

Simulation Controls

Toolpath Time Line: 00:00:00
Playback Time: x1.0

```
1: 156.670
2: G21 (C:\Users\lgdell\Desktop\ble
3 (Tuesday, July 10, 2018, 09:17
4 (C:\ProgramData\MecSoft Corpor
5 (4th Axis Engraving)
6 M6 T00 (17.5° Eng R 0.85)
7 M03 S20000 F954
8 G01 X110.5945 Y-0.0000 Z23.0000
9 Z30.0000 A-41.702 F350
10 X120.5445 A-42.407 F477
11 X120.6520 Z29.9999 A-40.770
12 X120.6559 Z50.0000 A-39.219
13 X120.6110 Z50.0001 A-37.732
14 X120.5039 A-36.318
15 X120.3536 Z50.0000 A-34.970
16 X120.1800 Z29.9999 A-33.715
17 X119.8064 Z29.9999 A-32.531
18 X119.4520 A-31.430
19 X119.0401 Z29.9999 A-30.410
20 X118.5731 Z50.0001 A-29.580
21 X118.0530 Z50.0002 A-28.686
22 X117.4811 Z50.0001 A-27.954
23 X116.2029 Z50.0000 A-26.790
24 X114.9520 A-26.113
25 X114.3635 Z50.0001 A-25.969
26 X113.7930 A-25.952
27 X113.2420 Z50.0000 A-26.050
28 X112.7101 Z50.0001 A-26.284
29 X112.1945 A-26.620
30 X111.6038 Z50.0000 A-27.067
31 X110.7327 Z50.0001 A-28.353
32 X109.8395 Z29.9999 A-30.035
33 X108.8304 Z29.9999 A-32.051
34 X108.3542 Z50.0005 A-34.301
35 X107.7819 Z29.9999 A-36.825
36 X107.3200 Z50.0002 A-39.050
37 X107.0662 Z29.9999 A-42.373
38 X107.0020 A-45.040
39 X107.1530 Z50.0000 A-47.572
40 X107.4505 A-49.820
41 X107.9757 A-52.078
42 X108.8640 Z29.9999 A-53.995
43 X109.4002 Z50.0000 A-55.641
44 X110.4308 Z50.0001 A-56.983
45 X111.5587 Z29.9999 A-58.069
```

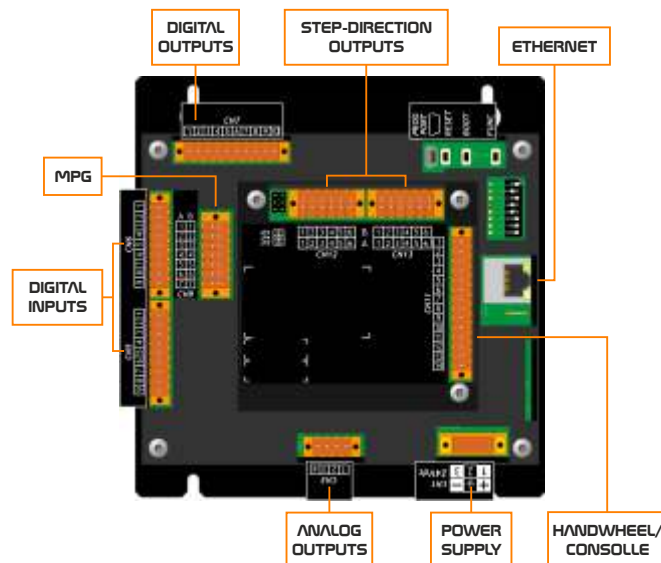
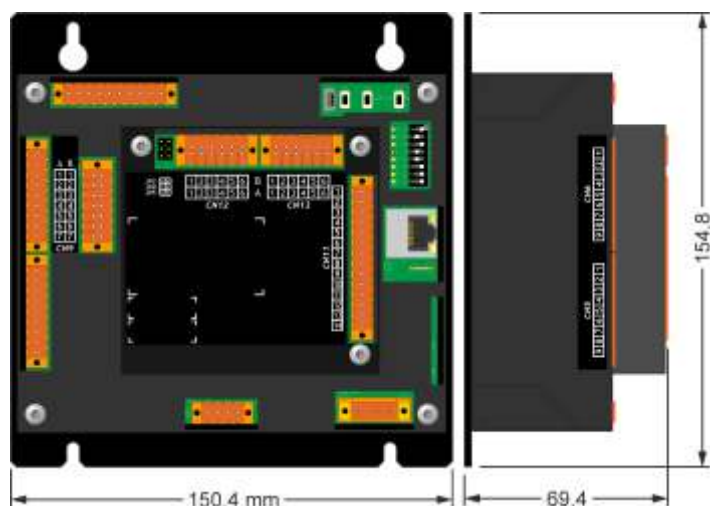
050 - X-100 Y0 Z0 A0
RosettaCNC board is disconnected

DISCONNECTED
Safe Mode

g-code file compiled with success

THE ROSETTA^{CNC} "REAL SIMULATOR" BRINGS THE WORKSHOP ON YOUR DESK

ROSETTACNC



Controller features

n.4 interpolated axes (X, Y, Z, A) for Stepper or Brushless motors control (125KHz÷1MHz PP/LD)

n.16 digital inputs

n.8÷16 digital protected outputs 24Vdc, 500mA

n.1 Ethernet port

Power supply 24Vdc

Removable anti-vibration spring connectors

CPU with DEDICATED FPGA

Speed override control with MPG (Manual Pulse Generator) or from PC

Look ahead up to 2000 blocks

Simultaneous movement of the 4 axes

Smooth with Spline Bezier

Spindle speed control with analog output 0-10V

4-axis external handwheel connector

High immunity to electromagnetic interference

According to standards EN 61000-6-2 and EN-6100-6-4

Software features

HMI on Windows XP÷W10 PC (download from "rosettacnc.com" site)

Embedded Gcode Editor

"Real" tool path Simulator

G-code macros for manual, automatic or custom tool change

Camera management with contextual alarms recording

Fanuc Macro-B compatible programming

Subprograms and G-code macros managing

Resume running program from select line

Feeler function

3D scanning with mechanical or laser probe

Ready for INDUSTRY 4.0: support OPC-UA and MODBUS protocols

Precise work time prediction

Accessories

Handwheel

MPG (Manual Pulse Generator)

